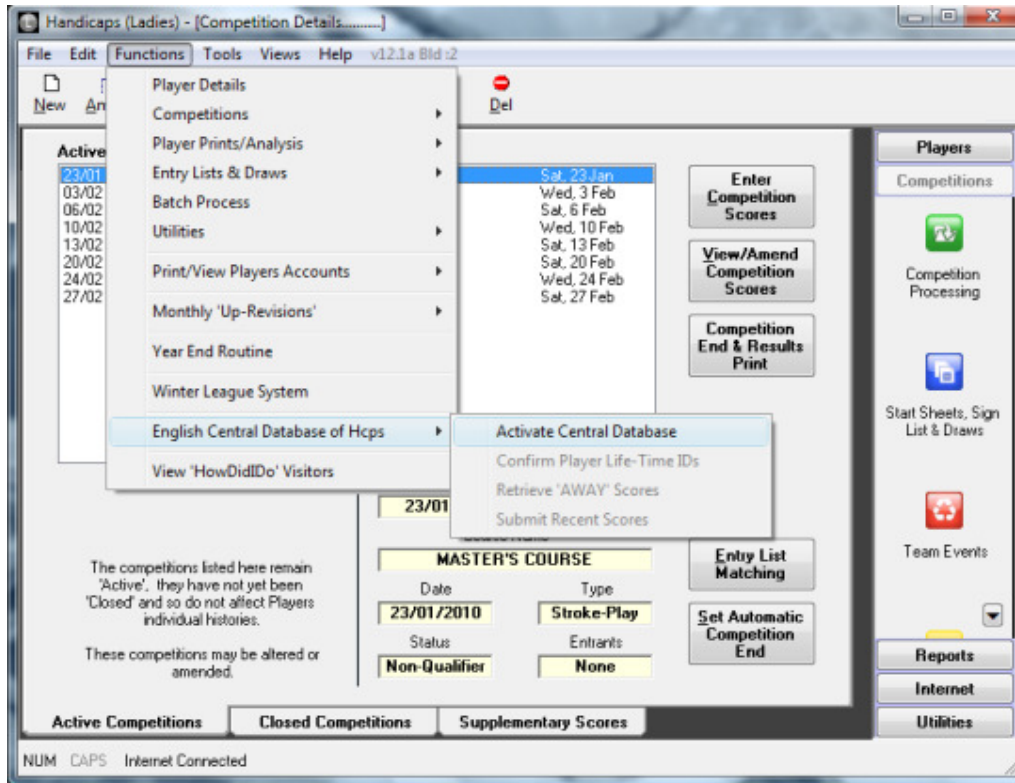


Club2000

- Open up your club 2000 (version 12) software and go in to handicaps
- Click the function button and scroll down to English Central Database



- Click on activate and input your club I.D – call 01526 354500 or email us at clubservices@englishgolfunion.org if you haven't received this. This will bring up your club name



- This will then activate a wizard which will take you through the upload process

Upon uploading, all your members will be allocated a unique I.D.

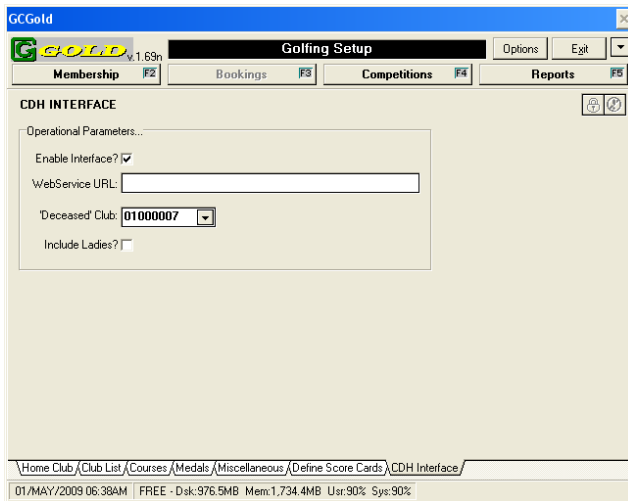
HandicapMaster

Using the EGU CDH for the first time

- 1) In HandicapMaster, select HELP menu, then HANDICAPMASTER HELP.
- 2) Above the left hand column, click CONTENTS tab.
- 3) In the left hand column, open chapter PUBLISHING TO INTERNET, then ENGLAND CENTRAL DATABASE OF HANDICAPS.
- 4) Please follow through with topic USING THE EGU CDH FOR THE FIRST TIME.

MH Systems/GC Gold

To begin using the CDH .



In GCGold™

Press the F11 key (or click on Options then Golf Setup)

Click on the “CDH Interface” at the bottom of the screen.

Click on “Enable Interface” and ensure there is a tick in the box.

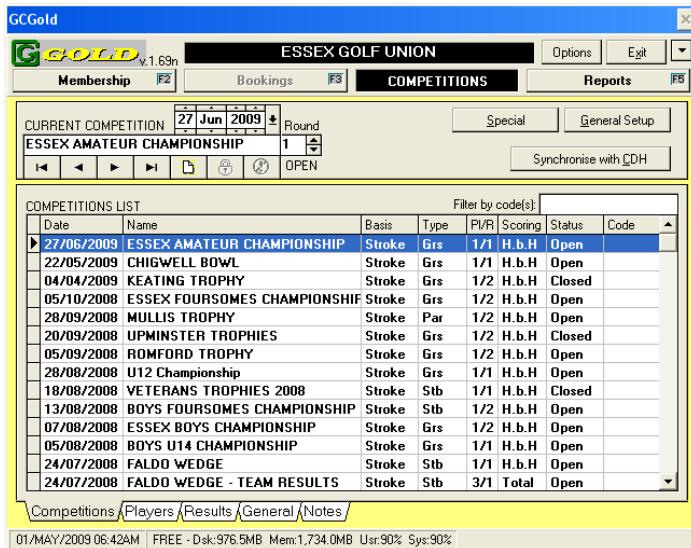
Select the “Deceased Club “ that you use.

DO NOT click on “Include ladies”. Ensure that the box IS NOT ticked

Press the F12 Key (or click on Options Administration)

Click on the “Membership Groups tab.

For each membership Group that you do not wish to obtain CDH ID’s for (eg Social or non-Playing Members) tick the “No Golfing Rights” box



Now click on Competitions.

Click on the “Synchronise with CDH” box.

This will launch the interface and (the first time) will obtain CDH ID’s for each of your members

It will also search for away scores for members.

Members with “Away handicaps”

These members need to obtain their CDH ID’s from their own clubs and supply it to you. In GCGold this number is inserted in the members record under the “CHIPS” tab. The field marked “CDH Lifetime ID”